



# Company Introduction

Logistic Platforms Australia Pty Ltd  
Authorised Australian Distributor for Sales and Hire



**LOGISTIC  
PLATFORMS**  
AUSTRALIA

## Safety share



Lets remove Dull, Dirty, Dangerous and Demanding work to allow or people to focus on their core tasks.

One of our goals is to ensure that there is no reason for a person to enter or manually handle products in a container.

Musculoskeletal disorders (MSD) accounted for about 33 per cent of all injury and illness cases reported by workers.



This presentation introduces the following supply chain innovations

- CROWS
- CROSS (Containerised Solar)
- Tracking system for monitoring the CROWS location,
- PILS, and
- Transportable Cyclone Shelter
- ECLIPS' new Offshore CROWS.





# Logistics and packaging invention and innovation— Container Roll Out Warehousing System (CROWS)<sup>TM</sup>







CROWS™ converted this....





LOGISTIC  
PLATFORMS  
AUSTRALIA

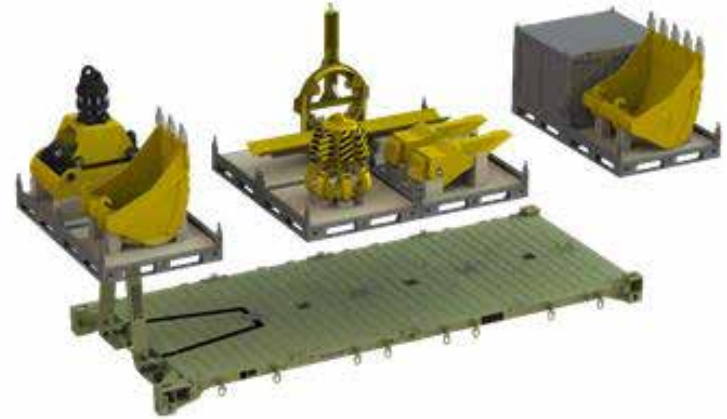
.....To this

THIS PRESENTATION AND ANY SUBSEQUENT COPY IS THE PROPERTY OF LOGISTIC PLATFORMS AUSTRALIA PTY LTD - ABN 52 643 196 785  
IT SHALL NOT BE REPRODUCED, DISTRIBUTED OR DISCLOSED WITHOUT WRITTEN CONSENT FROM LOGISTIC PLATFORMS AUSTRALIA  
PRODUCTS CONTAINED WITHIN THIS PRESENTATION ARE PROTECTED BY INTERNATIONAL PATENTS



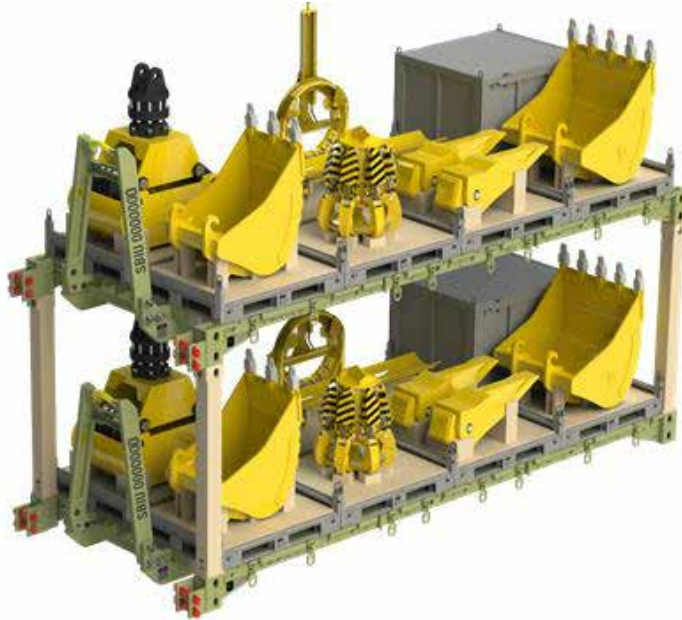
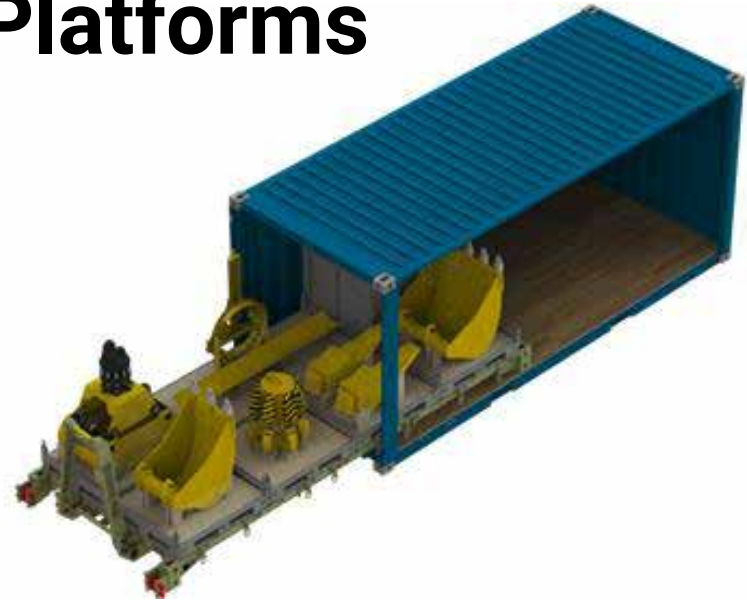
# Equipment Platforms

- Logistic Platforms recently worked with the world's largest OEM for Construction equipment to respond to an Australian Defence Tender.
- These platforms are based on the dimensions of the CROWS™



# Equipment Platforms

- The platforms fit into a standard ISO container and can be mezzanine stacked for transport and warehousing.





# Motivation: The Project Data – cost benefits

When CROWS™ was used on an Australian resource project it achieved:

- ROI returned in 12 months (~\$40M) and compounding
- Cost per tonne reduced by 75%
- Crane plant hire reduced by 91% (22 down to 2)
- Specialist lift operator (crane and rigger staff) savings
- 60% reduction in laydown and warehousing space
- Wrapping and Quarantine Inspection costs reduced by 90%
- Reduced trucks on the road



# Motivation: The Project Data – time benefits

In addition to the financial benefits of using CROWS™ there were significant time benefits including:

- Loading/unloading time reduced to ~ 3 minutes
- 30% increase in TEU payload reduced number of loads
- Less time conducting crane lifts – forklift & reach stacker lifts expedite loading
- Quarantine Inspections reduced by 75%
- Unmeasured time saved locating stores





# CROWS Screen Pipe Project - 2018

- In 2018 CROWS were used for the shipping of Screen Pipe From Texas to a Sth America Project.
- 40' CROWS were used for the Pilot.
- Logistics Platforms sent personnel from Australia to Houston to provide technical support
- Benefits included:
  - Improved safety
  - Faster Loading
  - Reduced handling of material
  - Improved storage
  - Reduced packaging costs/ waste



## Previous Methodology

### Previous process to ship screens involves:

- Difficult to load/unload crates requiring slings
- Risk of damage to screen pipe due to frequency of handling and failure of wooden crate packaging
- 4 screens per box/16 per container (planning figures based on previous experience)
- Packaging/dunnage/restraint require workers to enter and work in confined area of container, which is a safety hazard for up to two hours
- Difficult to stuff and de-stuff payload
- Crates difficult to reuse in global supply chains and represent quarantine risk and environmental impact
- Construction of storage racks for returned screens





# CROWS™ Transporting Pipe Screen



# CROWS™ Transporting Pipe Screen





# CROWS™ Transporting Pipe Screen

## Benefits:

- 1 Forklift and two personnel took 3 minutes to load and secure each CROWS into a shipping container. Reduced from 6 personnel for two hours.
- Same for unload
- Less waste
- Improved storage
- Reduced damage to screen pipe
- 21 screen pipe container, increased from 16



# Case Study

## Current container usage



## CROWS™ solution



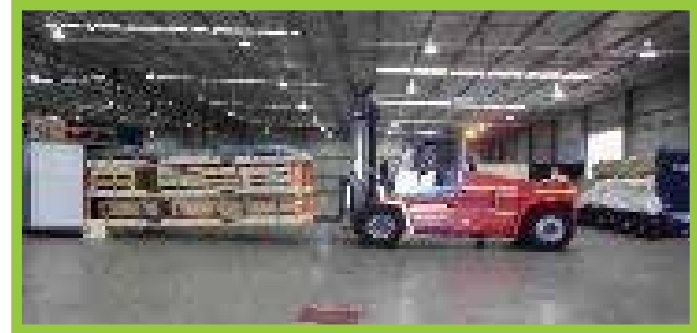


# Case Study

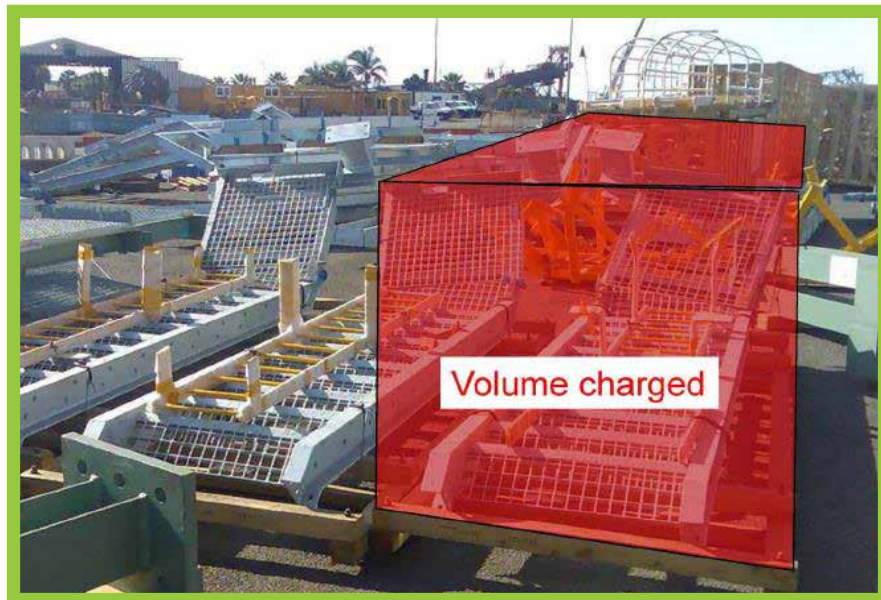
## Current container usage



## CROWS™ solution



## Current container usage



## CROWS™ solution





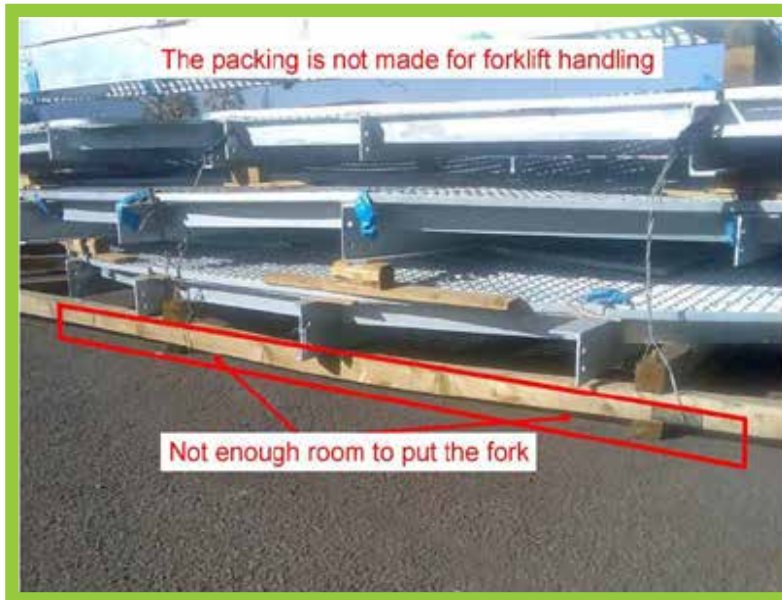
# Case Study



# Case Study

Current containerisation /  
palletisation.  
Not engineered.

CROWS™ solution to  
allow safe forklift handling





# Case Study

Current packaging. Not engineered or rated.

CROWS™ solution  
CROWS removes the need for non engineered handling



# Case Study

Current packaging.  
Not engineered or rated.  
No certification.

CROWS™ solution



# Case Study

Current transportation of odd shaped loads and hand rail.

CROWS™ solution for storage in ISO container for transport of odd shaped hand rails.





# Case Study



By matching each work package to the most appropriate logistics platform we are able to minimise the rehandling, maintain equipment accountability and minimise waste. As components come together they are matched into work packages.

# Case Study

Packaged into work packages at the OEM level ensures that when the equipment arrives on site it is complete, undamaged and ready to install.



# Case Study

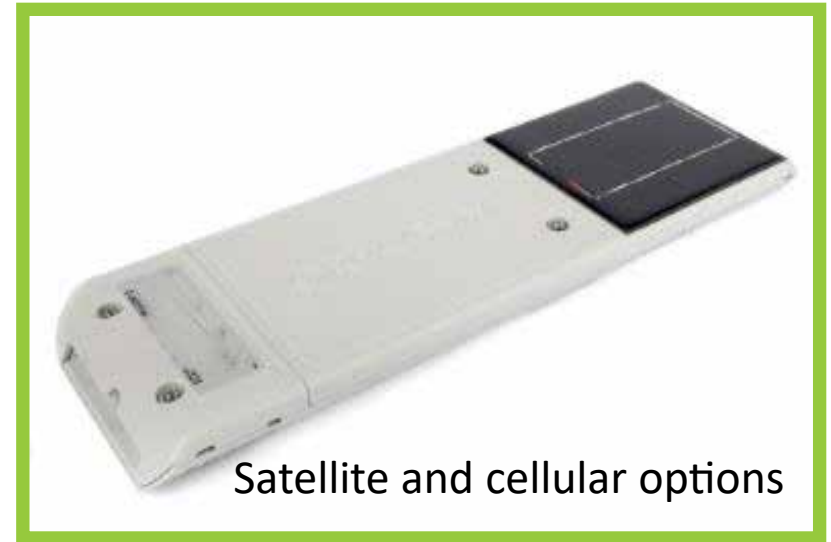
The modular nature of the Logistic Platforms designs make back loading simple and cost effective.





## CROWS Tracking

- We offer a range Ruggedised RFID, cellular and a cellular/satellite tracking solution for CROWS and material
- Ruggedised Barcode for assets (20 year life)
- Buy or Lease options available
- User requirements and coverage locations to be confirmed before selecting tracking solution
- 12 month warranty
- Long life/ Solar recharge
- Minimal maintenance
- Integrated web application that delivers near real time alerts
- Updates include: device status, location, history, arrival and departure
- Simple to self install



Ruggedised Barcode

# Container Roll Out Solar System



## PRODUCT FEATURES AND BENEFITS

- > CROSS is a factory assembled, relocatable solar power array providing up to 2175 W of power per 20 ft unit (CROSS20) and 4350 W of power per 40 ft unit (CROSS40).
- > CROSS is delivered fully assembled and can be rolled out of a shipping container and setup in minutes. The PV array is spring assisted, meaning no special tools are required during setup.
- > CROSS are inter-connectable with corner twistlocks and can be stacked up to seven high in an ISO shipping container during transportation or storage. CROSS is a modular solution suitable for projects up to utility scale and can be deployed without any ground penetration for anchoring.
- > CROSS include heavy duty rollers on one end enabling them to be rolled in or out of shipping containers for quick and easy deployment.
- > The PV array can be setup at 0°, 10°, 20° and 30° angles. Additional angles can be requested when ordered.
- > CROSS comes pre-wired to a DC isolator and ready for connection to an inverter.
- > CROSS is structurally certified for installation in AS/NZS 1170.2:2011 Wind Regions A to D.

# Container Roll Out Solar System

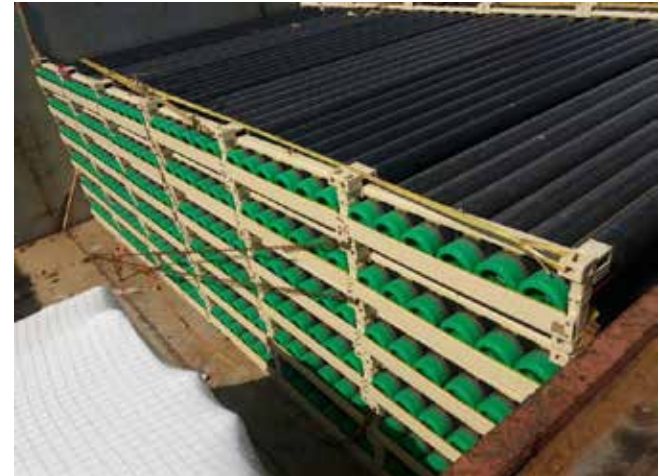


- Rated for use within wind region D
- Currently being used by the UK Army
- Links with mains power or hybrid power system





# Pipe Intermodal Logistics System (PILS™)



# PILS™ Factory...



# PILS™

...shipping...





# PILS™ ...site



# Small to Large bore Designs

- 12' – 48' Pipe



# Cyclone Shelter

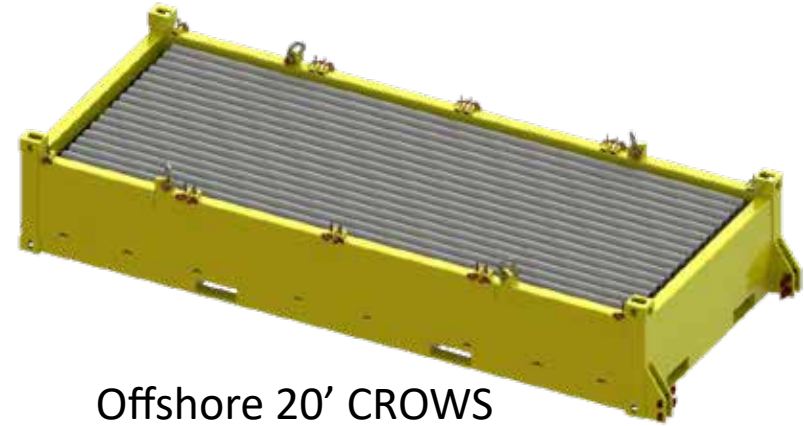


- Transportable Emergency Cyclone Shelter is designed to provide a safe environment for the duration of a cyclone, inclusive of wind Region D rated areas. Logistic Platforms' innovative design uses a core of four modified shipping containers, upgradable with additional container pairs to suit larger occupancy requirements.
- Each module includes a weighted inbuilt footing system, passive ventilation and non-reliance on external power.
- Modules are fully transportable; only ground preparation is required for installation.



# Offshore CROWS

- Logistic Platforms offer the opportunity to trial two certified Offshore 20' CROWS to enable pipe and stores to be shipped from point of manufacture to the offshore platform without cross-loading.
- Logistic Platforms have designed, fabricated and certified Offshore CROWS.
- Certified to both DNV (Offshore) and CSC (container supply chain) to allow seamless transition between the onshore and offshore supply chain.



Offshore 20' CROWS  
with line pipe Concept



Offshore CROWS

# Offshore CROWS



## On-shore Supply chain







# Conclusion

- Logistic Platforms can assist you to make your project freight and logistics simpler and more efficient.
- The earlier we are involved the greater the savings a client and project team can generate.
- Cost cutting can only go so far – enduring cost savings have to come through new and innovative ways of doing business.
- Logistic Platforms bring military solutions to the commercial sector, and commercial solutions to the military sector.
- Standardisation and container utilisation is the innovation that can unlock hidden value in projects.
- Logistic Platforms systems will lower the costs of your logistics, increase safety and reduce the number of trucks on the road.



**LOGISTIC  
PLATFORMS  
AUSTRALIA**

**1300 722 626**  
**info@logisticplatforms.com.au**  
**www.logisticplatforms.com.au**